

SB SERIES

Smart Multi-Jet Class C Water Meter

Available Size: DN 15 – DN 50 (1/2" – 2")

Applications

- Smart building, apartment, submetering
- Leakage detection (Night flow detection)
- Suitable for AMR, DMA, Wireless
- metering solutions

Main features

- Water meter for horizontal and vertical installation positions
- ISO 4064 Class C and R250 ratio standard
- Resistant to magnetic tampering
- Tamper-proof to make water thief impossible
- Direct reading LCD display-IP 68 electronic and registers
- and protected from fogging
- Electronic register with built-in smart functions



CUSTOM THE FUTURE



+66 (0) 2098 6132



admin@ntpsemi.com



www.ntpsemi.com

Intelligent Management Functions

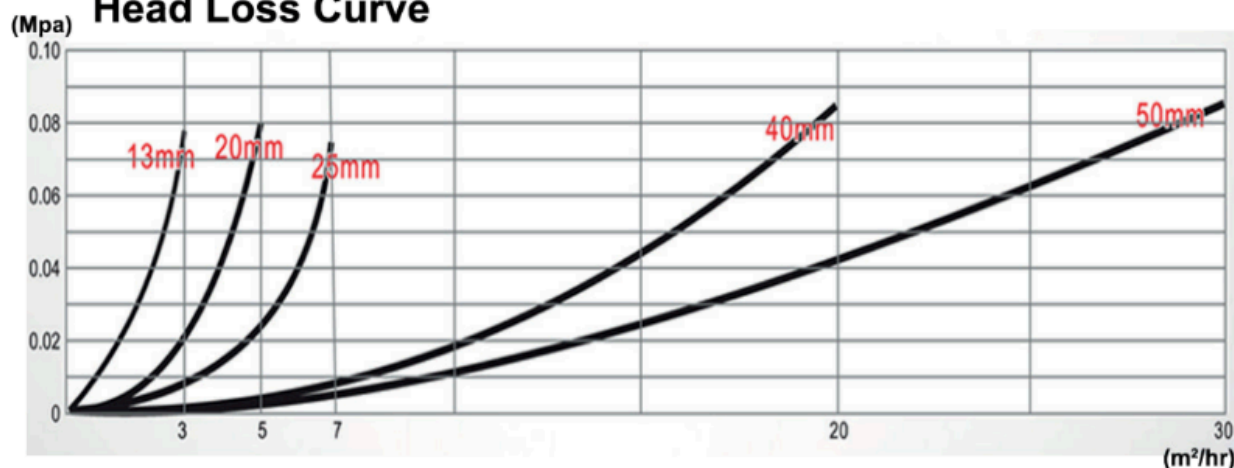
- Totalizer mode, Forward totalizer mode, Reverse totalizer mode,
- Flow rate mode, Management mode
- Leakage days, Reverse flow days, Tamper-proof days, Low voltage days

Technical Data

ISO 4064:2005	Flow	Units	DN15	DN20	DN25	DN40	DN50
	Q1	m ³ /h	0.010	0.016	0.0252	0.064	0.1
	Q2	m ³ /h	0.016	0.0256	0.04032	0.1024	0.16
	Q3	m ³ /h	2.5	4	6.3	16	25
	Q4	m ³ /h	3.125	5	7.875	20	31.25
	Q3/Q1	Ratio R	250	250	250	250	250

ISO 4064:1993 (Class C)	Flow	Units	DN15	DN20	DN25	DN40	DN50
	Qmin	m ³ /h	0.015	0.025	0.035	0.1	0.09
	Qt	m ³ /h	0.0225	0.0375	0.0525	0.15	0.225
	Qn	m ³ /h	1.5	2.5	3.5	10	15
	Qmax	m ³ /h	3	5	7	20	30

Head Loss Curve



CUSTOM THE FUTURE



+66 (0) 2098 6132



admin@ntpsemi.com



www.ntpsemi.com

Electronic feature

- Multi-point flow rates calibration
- Data synchronization within 10 sec.
- Build in 12 years battery lifespan
- Gear-free with electronics sensing devices
- Equipped with digital encoder, pulse,
- Modbus (RTU), RS485 options

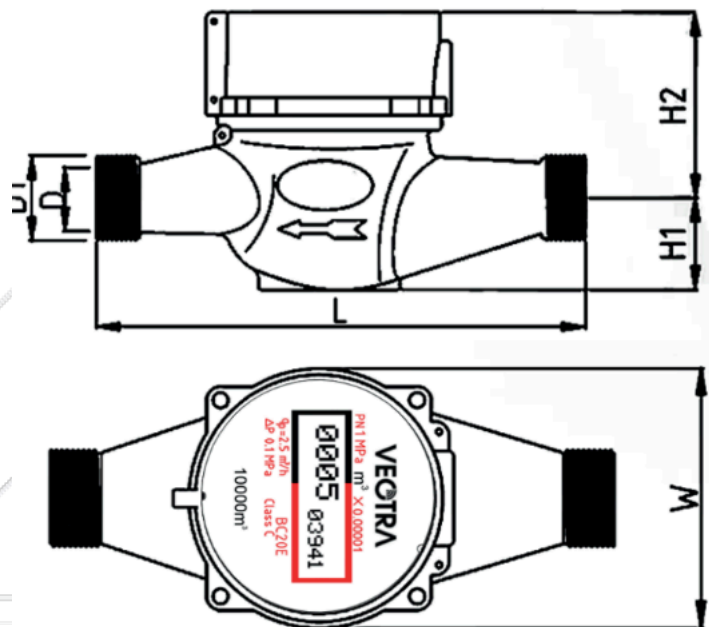
Technical Specifications

- Suitable for submerged condition
- Protection class IP68
- Materials are temperature resistant up to 65 °C
- Maximum working pressure: PN10 (10 bar)
- Maximum working temperature: 60 °C
- Meter body: Corrosion-proof copper alloy

Best Functions in DMA

(District Metering Area) to reduce non-revenue water

- Monthly water consumption logs
- Minimum Nighttime Flow logs
- 8 days Flow logging profile data



Model	Diameter (D) Unit: mm (inch)	Length (L) max	Max. Width (W±2)	From Bottom To Aperture (H1) max	From Head to Aperture (H2±2)	Thread Diameter (D1±0.3)	Approx. Weight (kg)	Threads Numbers Avg. 25.4 mm.
BC15E	15 (1/2")	165	90	40	80	25.8	1.8	14
BC20E	20 (3/4")	190	90	37	80	33.0	1.9	14
BC25E	25 (1")	210	90	42	85	39.0	2.2	14
BC40E	40 (1 1/2")	245	124	50	93.8	56.0	3.41	11
BC50E	50 (2")	275	125	55	100	67.0	3.88	11

CUSTOM THE FUTURE



+66 (0) 2098 6132



admin@ntpsemi.com



www.ntpsemi.com